

Purified anti-ovine IgG1 Antibody

Catalogue number:

Size: 100µg

Clone: McM1

Description: For use in the measurement of ovine IgG1 sub-class antibody. For *in vitro* research purposes only

Product details

Reactivity: Sheep

Antibody type and isotype: Monoclonal, IgG1

Host species: Mouse

Formulation: sterile PBS, pH7.5

Concentration: 0.88mg/ml

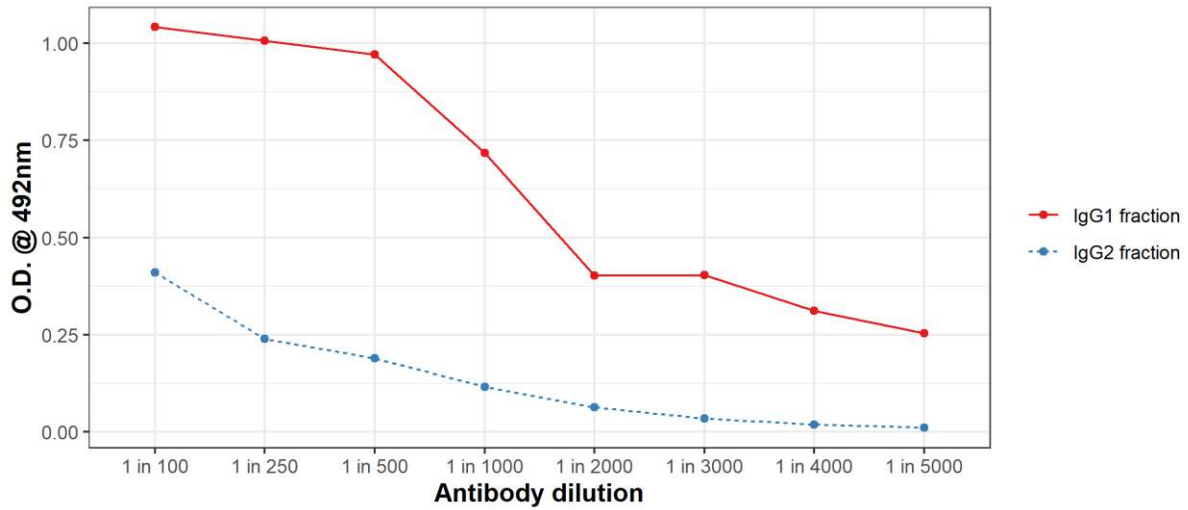
Lot number: 050121-01

Storage & Handling: The antibody solution should be stored at +4°C. Long term storage at -20°C, avoid repeated freeze-thaw cycles.

Application(s): ELISA

Quality Assurance: By direct ELISA using IgG1 and IgG2 enriched fractions from ovine serum purified via protein A sepharose column fractionation.

Detection of ovine IgG1 and IgG2 enriched fractions by anti-ovine IgG1 (McM1)



Recommended Usage: For antigen-driven IgG subclass measurement by ELISA, suggested use at 1:1000 dilution. It is recommended that a specific titration is performed for each application.

References:

K.J. Beh (1987). Production and characterization of monoclonal antibodies specific for sheep IgG subclasses IgG1 or IgG2. *Vet Immunol & Immunopath* **14**: 187-196.

Schmerr & Goodwin (1991) Separation of ovine IgG1 and IgG2 on protein A-Sepharose. *Comp Immunol, Microbiol and Inf Dis* **14**: 289-295.

Nisbet *et al* (2019). The rational simplification of a recombinant cocktail vaccine to control the parasitic nematode *Teladorsagia circumcincta*. *Int J for Parasitol* **49**: 257-265.

Email: info@pentlandsimmunologics.org
www.pentlandsimmunologics.org

©Moredun Research Institute 2021
Moredun Research Institute, Pentlands Science Park, Bush Loan, Penicuik, EH26 0PZ, UK