

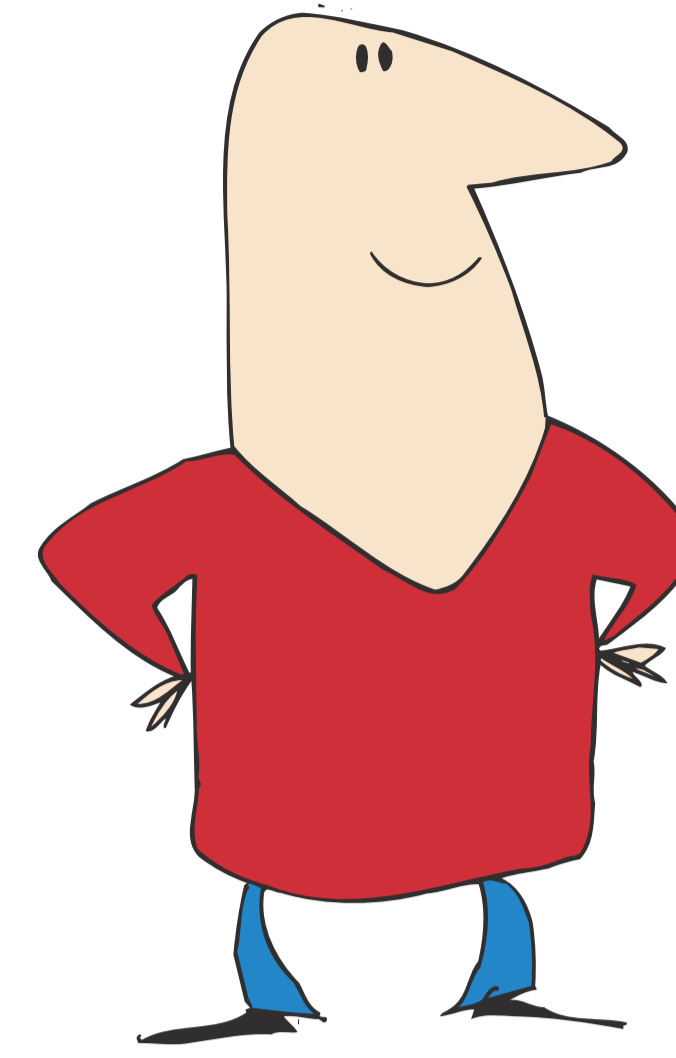
Understanding Sizes

Parasites, like worms and insects, are often large enough to see with your own eyes. Germs however, like **bacteria** and **viruses** are much too small for this. We need to use strong magnifiers (called **microscopes**) to see them.

If we compare them to everyday objects, we can understand their relative size to each other (called **scale**).



If



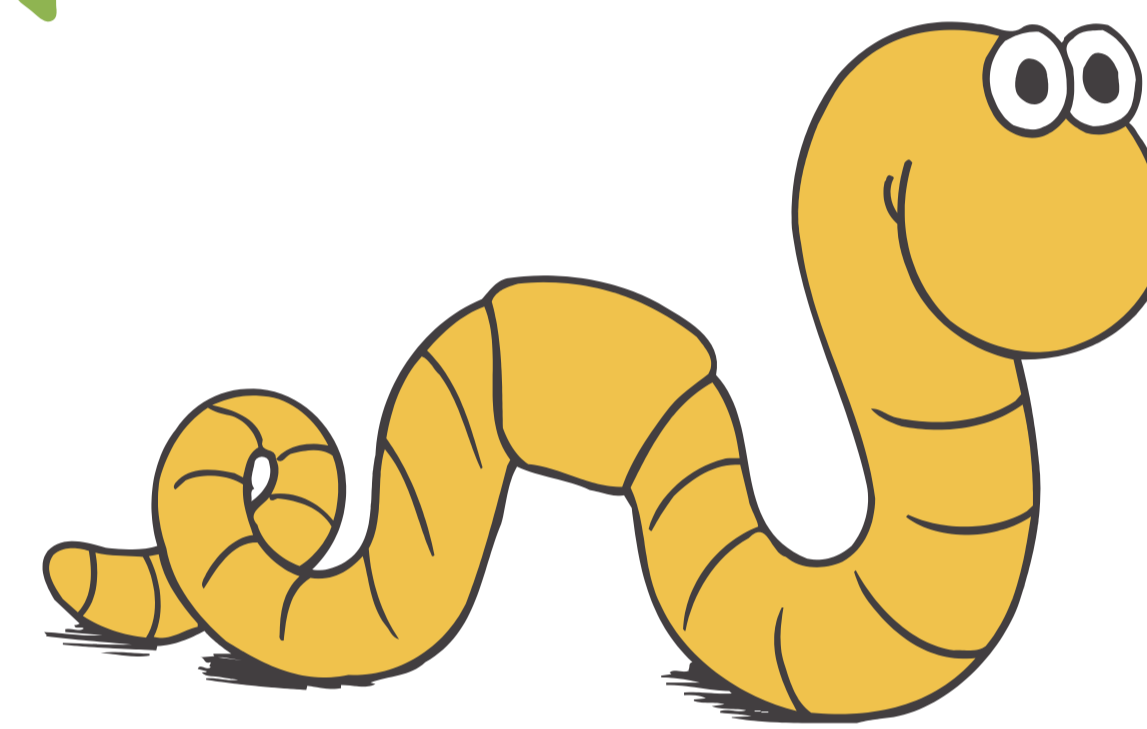
a person

=



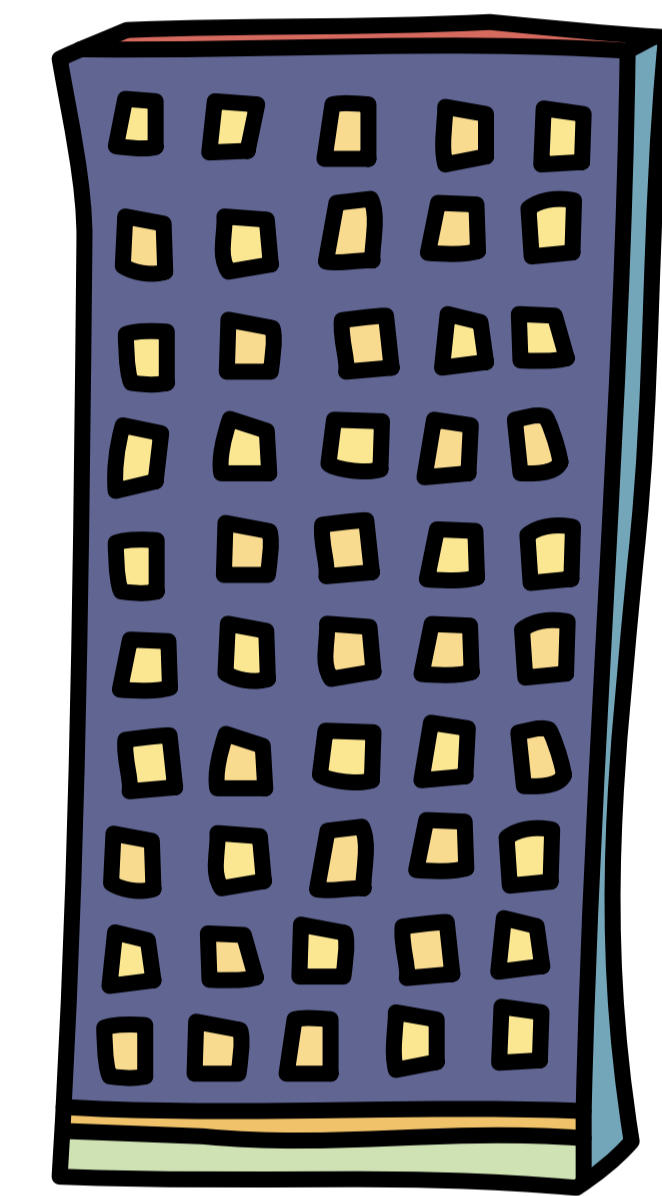
Great Britain

Then

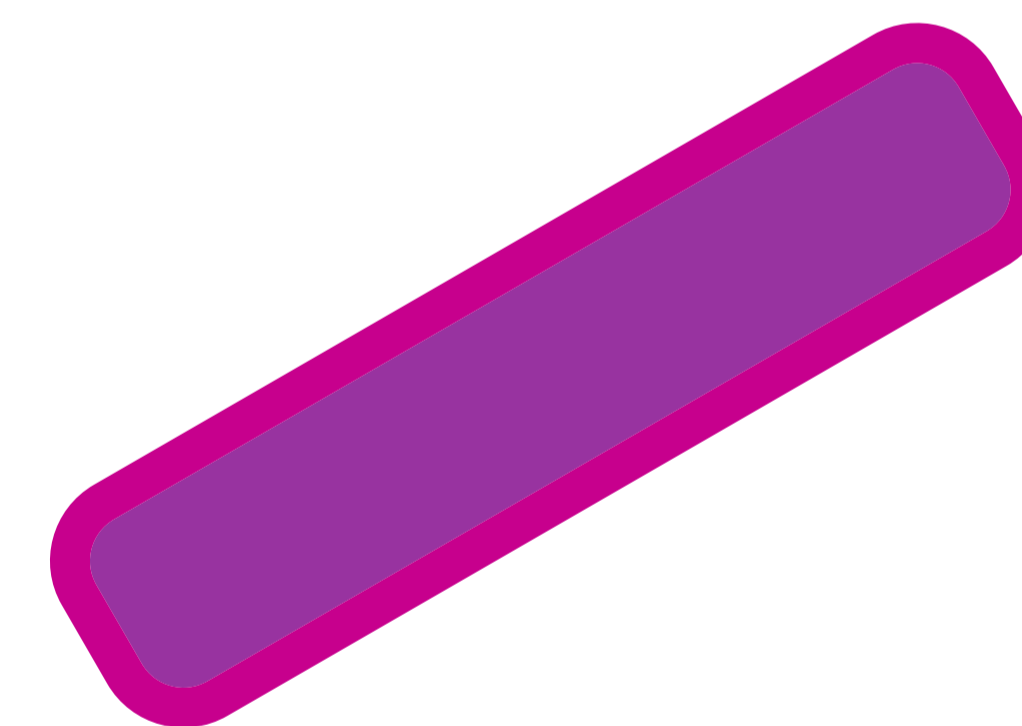


a parasitic worm

=

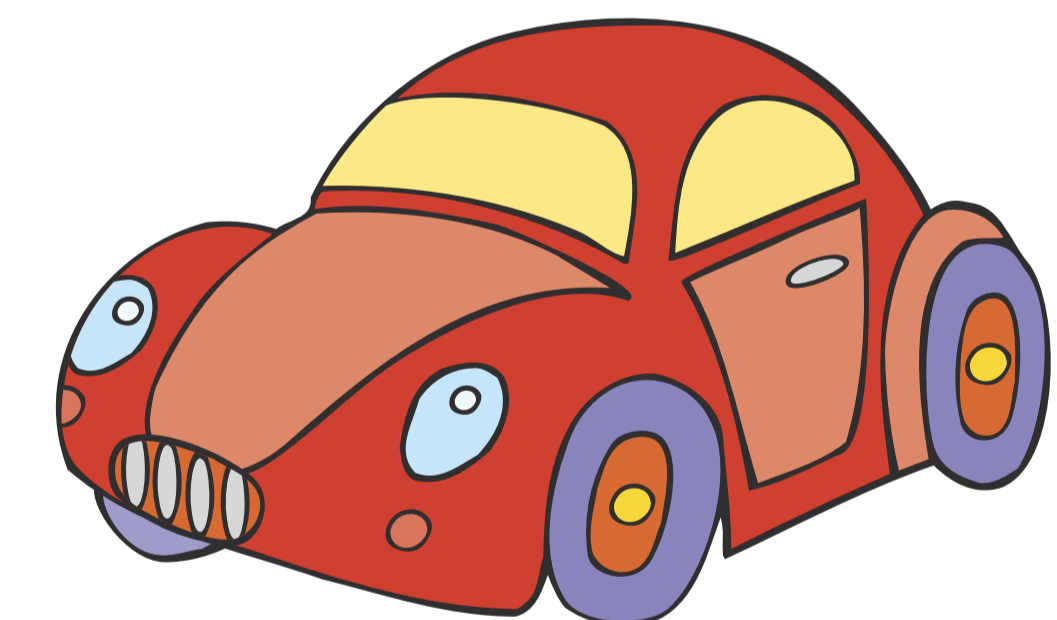


a skyscraper

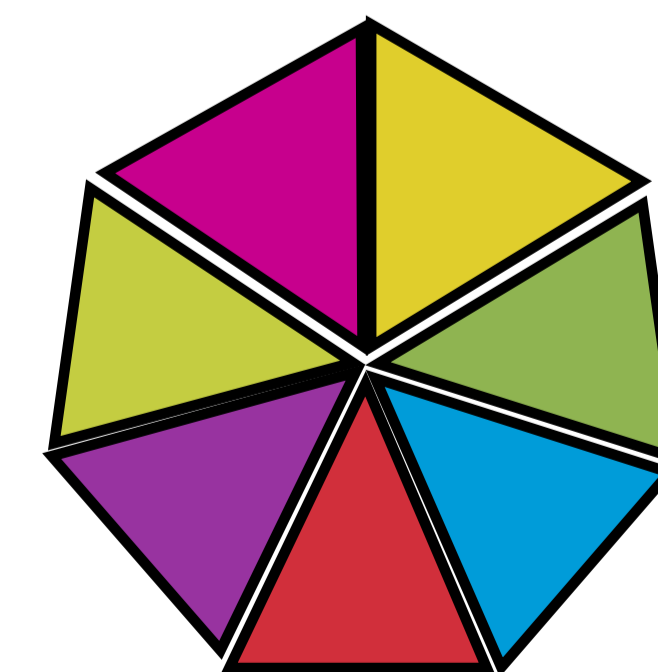


bacteria

=



a car



a virus

=



a marble